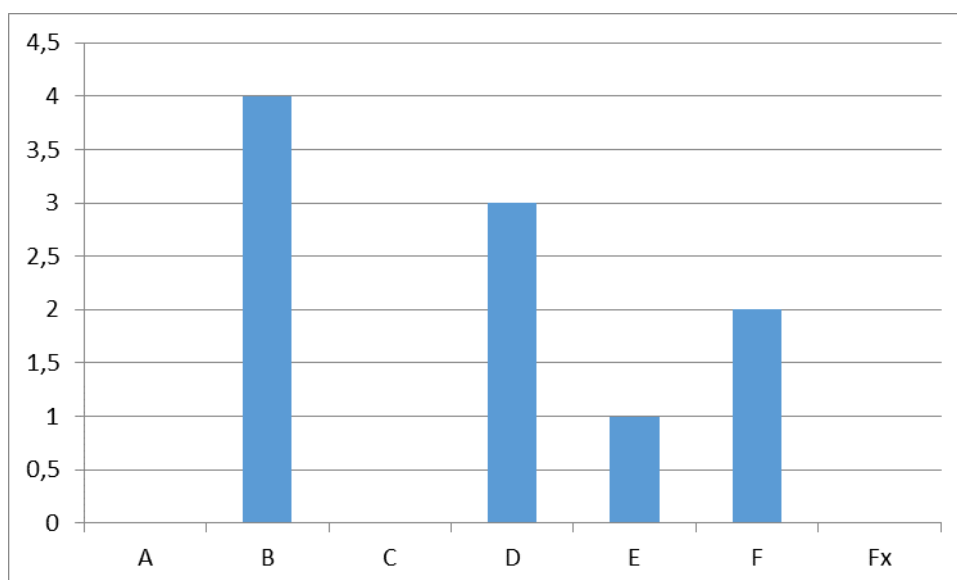


Reflektions – Course evaluation

Kursens namn: Examensarbete inom hälsoinformatik 30hp
Degree project in health informatics 30 ects, (5HI014)
Masterprogrammet i hälsoinformatik (5HI12) Termin 4
Sabine Koch LIME, KI

Statistics – Throughput

The course started in semester 4 – 14 students got registered. 7 students have completed the course in June – 3 students defended their thesis in September – and 4 students didn't finish their thesis this year. The figure below illustrates the grading results of the 10 students who defended their thesis.



Strength – List 3-5 strengths

Group supervision meetings
Structured dates for feedback and discussion & information provided on PingPong
Possibility to submit a preliminary thesis and getting feedback before handing in the final thesis

Weaknesses – List 3-5 weaknesses

This course should be more present in the 3rd semester. Give more information about the ethical regulations and let students write a PM.
More feedback from the examiner
More aligned rules for supervision – the university should set the schedule for supervision meetings.

Teacher reflections

Only 7 students answered the questionnaire in June despite several reminders and despite explaining the fact that there will not be a second survey in autumn. The course set-up is however stable and usually works well since several years. Non-mandatory group supervision

meetings are scheduled for the entire class where both students and supervisors are invited. There was extremely low participation of the students at these meetings this year. It has happened that the number of teachers was higher than the number of students! The same is true for information meetings on the thesis course during semester 3 – extremely low student participation from this class. All students get feedback by the course leader on the project plan and then by the reviewer/examiner on the progress report (half-time) and preliminary thesis. Rules for the amount of supervision do exist but it should still be up to each supervisor how to schedule meetings with the students and I do not intend to change this.

Immediate changes – What will be done until next time the course is given?

Independent of this course survey, we have developed a template for description of ethical issues of the thesis that needs to be handed in together with the project plan. This template has been approved by the Education Committee at LIME (LIME UN) and will be used by all thesis courses at LIME. It will be introduced for the next instance of this course.

Also, currently students have the choice of taking the scientific research methods course at either KI or Stockholm University. As of Spring 2018 all students will take the KI course which will be aligned with the thesis course. Already today students have the possibility to use the scientific research methods course to either prepare their project plan (KI course) or do a small pre-study as preparation for the thesis (SU course) but there are few students exploiting these options.

Seminars to discuss project plans and progress reports will be made mandatory.

To discuss further – is there anything to be changed in the longer term?

None